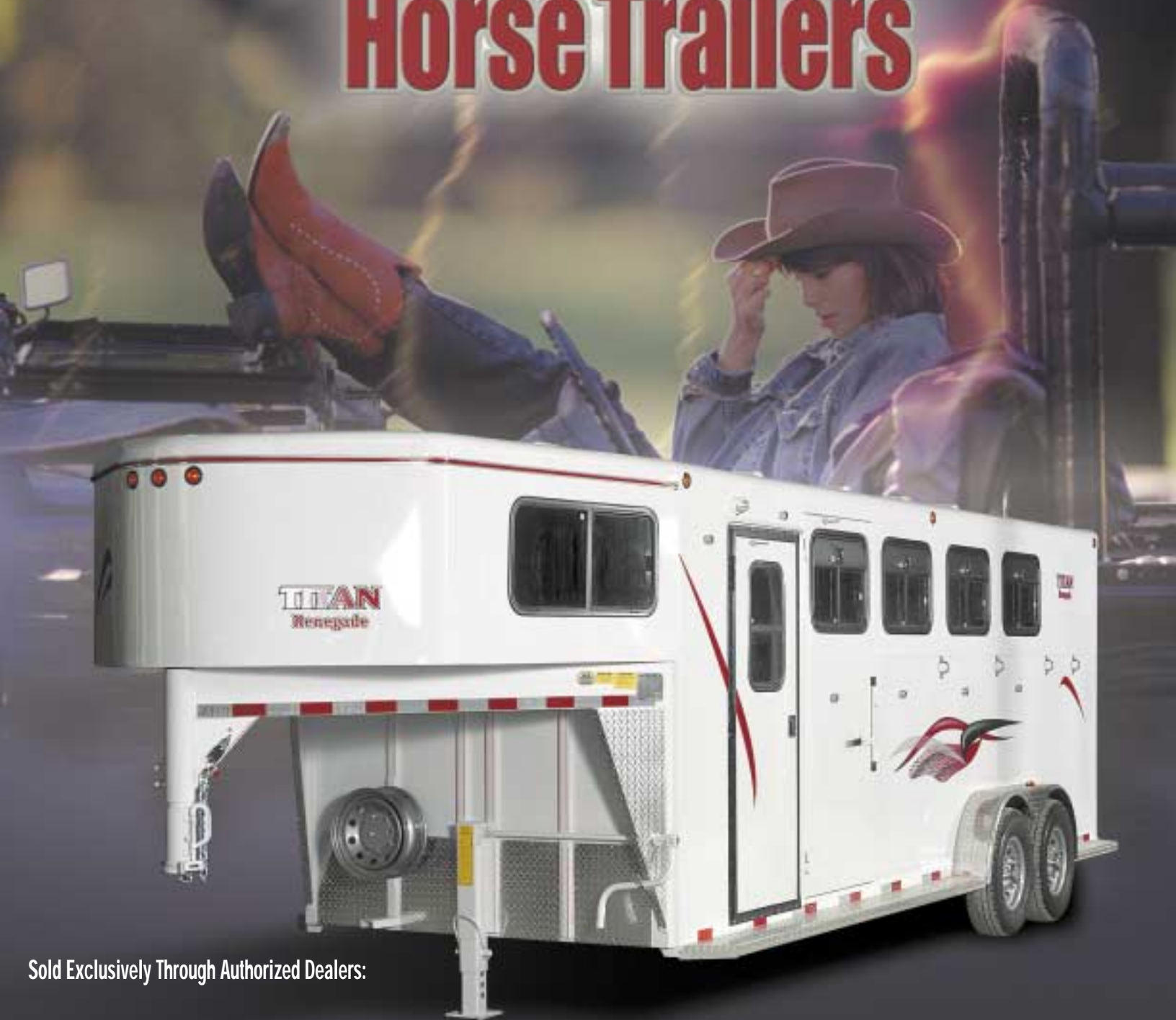


TITAN

Titan Trailer Mfg Horse Trailers



TITAN
Renegade

Sold Exclusively Through Authorized Dealers:

Renegade GN Horse Trailers

2



6'8" x 18' Renegade I shown with optional Plexiglas and 16" x 24" vertical window in door standard features page 7



6'8" x 22' Renegade II shown with optional window in dressing room door standard features page 7



Classic Horse Trailers



6'8" x 18' Classic I shown with optional Plexiglass and camper screen door
standard features page 7



Titan Bumper Series

4



6' 8" x 18' - Renegade II 3-Horse
shown with optional windows in nose



6' 8" x 16' - Classic II 3-Horse



6' 8" x 14' - Avalanche I



6' x 12' - 2-Horse Thoroughbred

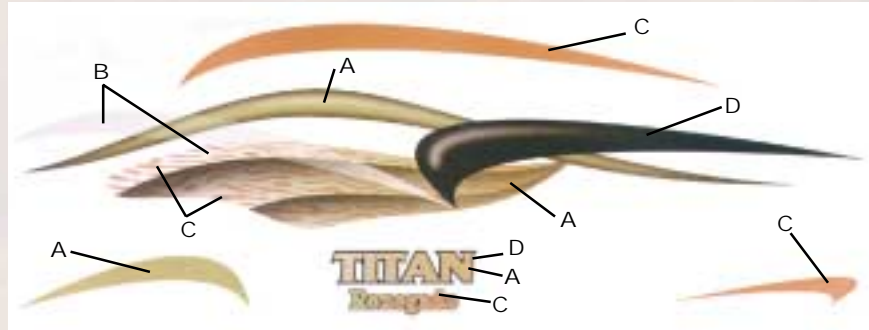


6' 8" x 14' - Avalanche II



6' x 10' - 2-Horse Straight Load Classic
Available with Renegade Pkg.

Titan's Renegade

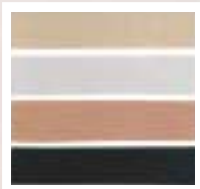


Titan's Renegade Graphic Colors



-01 Red Combination

- A: -153 Cardinal Red
- B: -58 Silver Met.
- C: -19 Wine
- D: -55 Black



-02 Gold Combination

- A: -45 Light Gold Met.
- B: -58 Silver Met.
- C: -247 Apricot Mist
- D: -55 Black



-03 Silver Combination

- A: -20 Charcoal
- B: -58 Silver Met.
- C: -198 Pyrite
- D: -55 Black



-04 Blue Combination

- A: -59 Dark Blue Met.
- B: -58 Silver Met.
- C: -364 Shale Blue Met.
- D: -55 Black



-05 Green Combination

- A: -726 Hunter Green Met.
- B: -58 Silver Met.
- C: -332 Dark Jade Star
- D: -55 Black

Titan's Classic Graphic Colors



-01 Red Combination

- A: -153 Cardinal Red
- B: -58 Silver Met.
- C: -19 Wine
- D: -43 Dark Cherry Met.



-02 Gold Combination

- A: -352 Champagne Star
- B: -55 Black
- C: -45 Light Gold Met.
- D: -247 Apricot Mist Met.



-03 Silver Combination

- A: -58 Silver Met.
- B: -55 Black
- C: -45 Light Gold Met.
- D: -10 Smoke Met.



-04 Blue Combination

- A: -592 Med. Blue Met.
- B: -55 Black
- C: -364 Shale Blue Met.
- D: -59 Dark Blue Met.



-05 Green Combination

- A: -726 Hunter Green Met.
- B: -55 Black
- C: -321 Win Green Met.
- D: -332 Dark Jade Star

Paint Color Chart

	#59300 Gunmetal Grey
	#42721 Linen White
	#59321 Silver
	#59533 Emerald Green
	#59529 Indigo Blue
	#59531 Brown
	#59532 Sandstone
	#59320 Lt. Champagne Met.
	#30442 Black
	#59530 Brilliant Blue
	#39067 Crimson Red
	#42149 Red
	#32669 Satin Grey

—Colors may not be true due to printing—



Titan's Classic

Features & Options

6



Titan fully-enclosed 1-piece backgate



Renegade and Classic double-back doors



Challenger fully-enclosed backgate



View of Gooseneck dressing room
optional carpet and 30" x 30" bay window



Swing-out saddle rack with rear tack

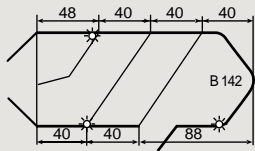


Optional drop-down feed doors with drop bars

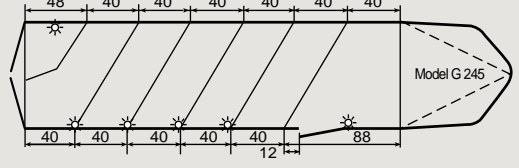
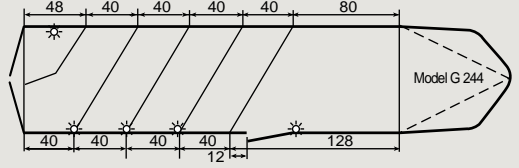
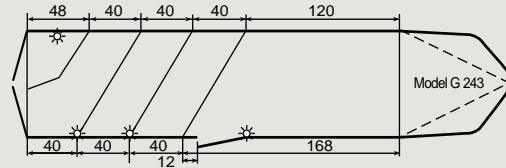
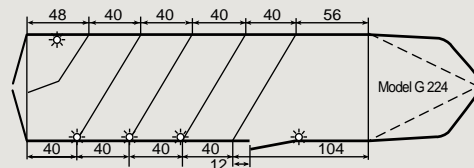
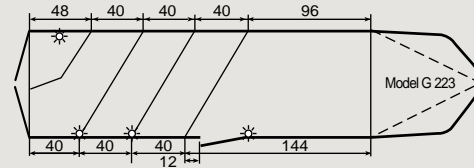
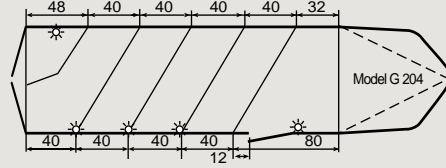
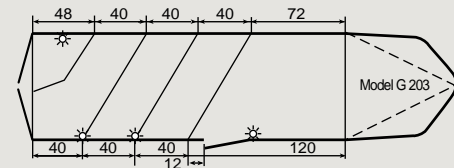
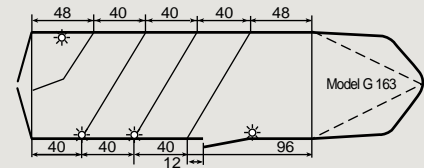
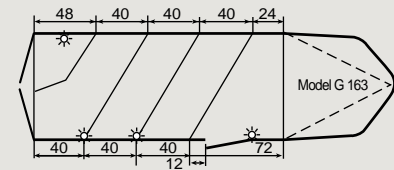
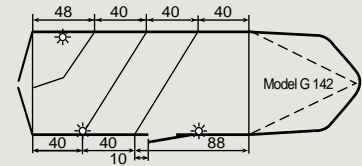
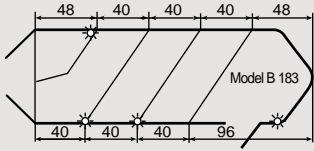
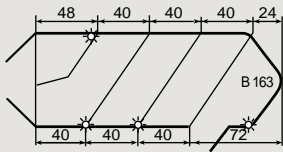
Titan Trailer Mfg. has excelled to the highest level in painting facilities. Our wash cycle involves a degreasing detergent, followed by a phosphate rinse, then baked dry to set the stage for priming. After priming, the trailer is shot with a high solids urethane topcoat. Trailers are then returned to the infrared bake oven for a complete cure of finish. ■ Titan uses the pro-mix paint system. The pro-mix electronic flow metering provides precise, continuous on-line ratio monitoring. Our down-draft booth and electronic mixing gives every Titan Trailer a superior quality finish.



Titan Trailers invested in the best bake oven on the market. The infrared bake oven can reach 160°F and insure a full paint cure in 20 minutes. Airborne contaminants are often present in traditional curing systems due to large volumes of air needed to feed the process, Infrared bake ovens don't require this volume of air. Infrared bake ovens will give you higher gloss, longer lasting and harder finishes on Titan Trailers.



Floor Plans



Model	No. Horse	Floor Length	Full Length	Dressing Room	Tires	Axles	Approx Trailer Wt.
G142	2	14'	21.5	40" SW / 88" LW	23585R16E	6000# 8 Bolt	4380#
G163	3	16'	23.5	24" SW / 72" LW	23585R16E	6000# 8 Bolt	4760#
G183	3	18'	25.5	48" SW / 96" LW	23585R16E	6000# 8 Bolt	5140#
G203	3	20'	27.5	72" SW / 120" LW	23585R16E	7000# 8 Bolt	5520#
G204	4	20'	27.5	32" SW / 80" LW	23585R16E	7000# 8 Bolt	5520#
G223	3	22'	29.5	96" SW / 144" LW	23585R16E	7000# 8 Bolt	5900#
G224	4	22'	29.5	56" SW / 104" LW	23585R16E	7000# 8 Bolt	5900#
G243	3	24'	31.5	120" SW / 168" LW	23585R16E	7000# 8 Bolt	6280#
G244	4	24'	31.5	80" SW / 128" LW	23585R16E	7000# 8 Bolt	6280#
G245	5	24'	31.5	40" SW / 88" LW	23585R16E	7000# 8 Bolt	6280#
G26	4	26'	33.5	104" SW / 152" LW	23585R16E	7000# 8 Bolt	6975#

Features and Measurements

16 ga. Side Sheets	92" Stall Length on 40" Centers
20 ga. Roof Sheets	1/2" Studs on 6 Bolt Wheels
12 ga. Roof Cove	9/16" Studs on 8 Bolt Wheels
1" x 2" 14 ga. Tubing	Polar Latches on 1 Piece Back Gates
6' 8" Wide Inside Measurement	Primed / Painted / and Baked
Back Gate Opening 72"W x 81" Tall	60 / 40 Double Back Doors
Inside Height 87 1/2" Floor to Roof	Cam Lock on Double Back Doors
Stem Length 7' 1/2"	Escape Door 1st Horse 37 1/2" Wide
Inside Height 87 1/2"	Dressing Room Door 34 1/2" Wide
Load Height 17 1/2"	Split Floor From DR to Horse Area
Spring Loaded Jack	Torsion EZ Lube Axles
Dexter Axles	

Renegade/Classic Gooseneck/Bumper I Standard Features

Galvanized Skin
Poly Rubber Lined
Torsion EZ Lube Axles
7' Inside Heights
Double Steel Insulated Door
Escape Door In Front
1st Horse
Saddle Rack
Rubber Rear Bumper
Spare Wheel
Electric Brakes
Dressing Room
Rear Telescoping Divider
2-18 x 44 Bus Windows
in Nose (GN only)
Dome-Style Roof Vent
Brace for A/C
Back Gate Fully Enclosed
Sealed Beam Lights
Greaseable Hinges
Spring Loaded Dual Pin Jack
Aluminum Package

Renegade/Classic Gooseneck II Standard Features

Galvanized Skin
Torsion EZ Lube Axles
w/8 Bolt Hubs
Electric Brakes on all
4 Wheels
Solid Dressing Room
Dome-Style Roof Vent
in Dressing Room
Slant Dividers (rear dividers
telescoping)
2 Bus Windows in the Nose
Saddle Rack
Plexiglas on Butt Side
Porch Light at Dressing
Room Door
Spare Wheel
Back Gate Fully Enclosed
(no slide)
New Greaseable Exterior
Hinges
New Interior Light Fixtures

Aluminum Package
Poly Rubber Lined
7' Tall
Double Steel Door
w/Chrome Latch
Carpet Package in
Dressing Room
Escape Door in Front
of 1st Horse
Pop-Up Roof Vents in
Horse Area
Feed Doors w/Bus
Windows
Rubber Floor Mats in
Horse Area
Rubber Rear Bumper
Dome Lights (1-dressing
room, 1-per divider)
Inside and Outside
Tie Rings
Fully Caulked
Formed Running Boards
Multi-Colored Graphics
Spring Loaded Dual
Pin Jack

Renegade/Classic Gooseneck III Standard Features

Galvanized Skin
Torsion EZ Lube Axles
w/8 Bolt Hubs
Electric Brakes on all
4 Wheels
Solid Dressing Room
Dome-Style Roof Vent
in Dressing Room
Slant Dividers (rear
dividers telescoping)
2 Bus Windows in the Nose
Saddle Rack
Plexiglas on Butt Side
2 Porch Lights (1-dressing
room, 1-at rear)

Feed Bags
Spare Wheel
Fully Caulked
Chrome Gravel Guard
Formed Running Boards
New Interior Light
Fixtures
Poly Rubber Lined
7' Tall
Double Steel Door
w/Chrome Latch
Carpet Package in
Dressing Room
Escape Door in Front
of 1st Horse
Pop-Up Roof Vents in
Horse Area
Feed Doors w/Bus
Windows

Rubber Floor Mats in
Horse Area
Permanent Rear Tac w/
Double Back Doors
Padded Stalls
Rubber Rear Bumper
Dome Lights
(1-dressing room,
1-per divider)
Inside and Outside
Tie Rings
Multi-Colored Graphics
New Greaseable Exterior
Hinges
Spring Loaded Dual Pin Jack
Aluminum Package

TITAN

Challenger Horse Trailer



Standard Features

- 2 x 3 Angle Frame
- 6000# Torsion GN
- 3500# Torsion Bumper
- 15" Radial Tires
- Electric Brakes on All 4 Wheels
- Solid Wall Dressing Room
- 3 Tier Saddle Rack
- 6 Bridle Hooks
- 1 Dome Light in Dressing Room
- Spring-Loaded Jack
- Back Gate Fully Enclosed (no slide)
- 6' 6" Tall
- Factory Steel Door
- 2 Bus Windows In Nose
- Spare Wheel
- CCA Treated Wood Floor (no splices)
- All Paint Colors Available
- Black or White Stripe

Only Option Available

- Rear Tack
- Collapsible Rear Tack
- Dividers
- Carpet
- Axle Upgrade
- Spare Tire

- Double Back Doors
- 7 feet tall
- Pop-Up Roof Vents
- Porch Light
- Dome Vent

6'8" x 16' Challenger 3-Horse Slant
shown with porch lite & dome vent



6'8" x 16' Challenger 3-Horse Slant
shown with rear tack & dividers

TITAN

Pictures may include optional equipment. Dimension and weights are approximate and may vary slightly by model in this brochure. Titan Trailers reserves the right to make changes to trailers without notice.